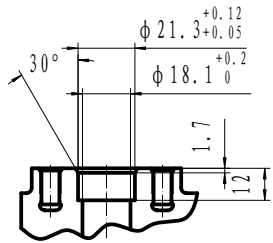
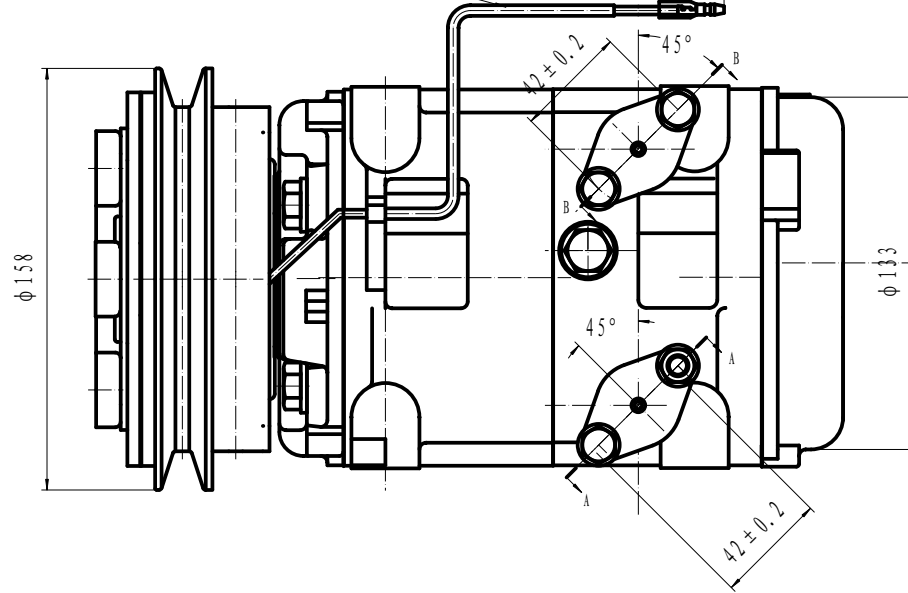


断面 A-A



断面 B-B

保护管 L = 150  
线总长 300<sup>+20</sup><sub>0</sub>



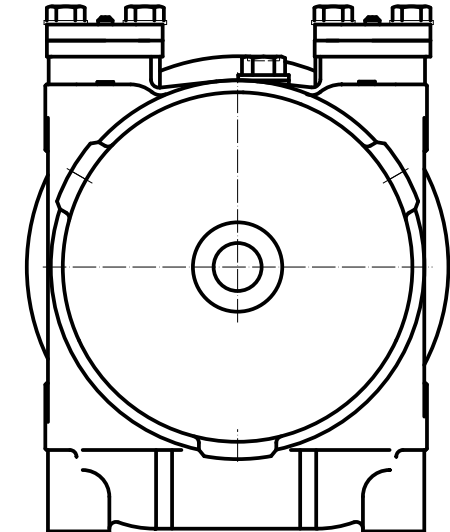
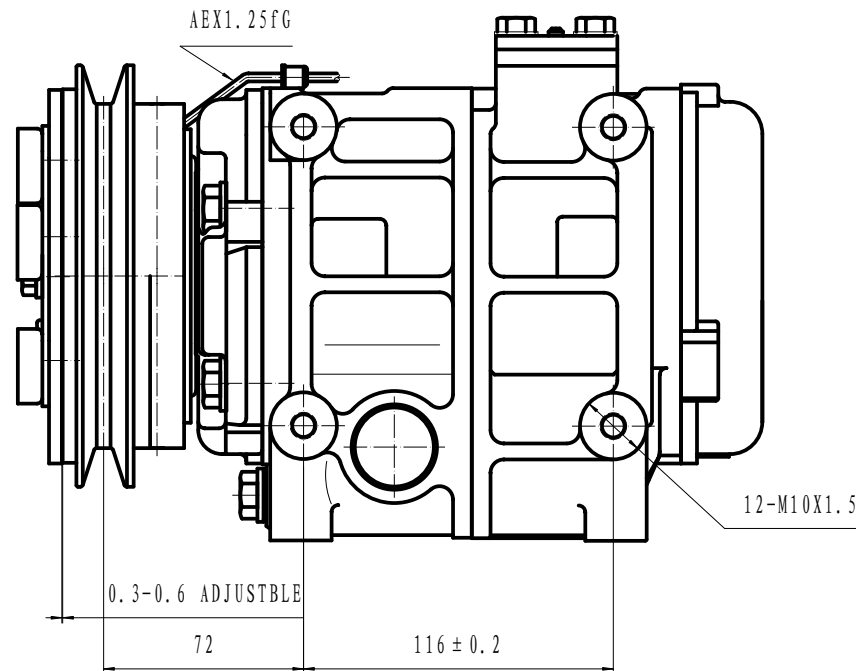
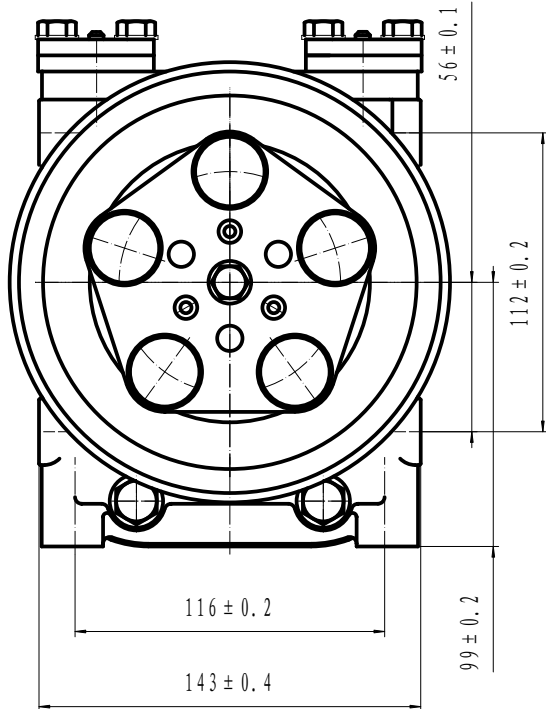
- COMPRESSOR ASSY:
- OPERATING SPEED: 700-5000r/min (MAXIMUM SPEED 6000r/min)
  - DIRECTION OF ROTATION: CLOCK WISE
  - WEIGHT: 15.5Kg
  - REFRIGERANT: HFC-134a
  - LUBRICANT: PAG 500<sup>TM</sup>cm<sup>3</sup>
  - WEIGHT: 9.5Kg (WITHOUT OIL)

- MAGNETIC CLUTCH:
- RATED VOLTAGE: DC 24V
  - SHAPE OF THE BELT: 1B
  - STATIC TORSION: ABOVE 78N.m (8kgf.m)
  - WATTAGE: 48W (DC24V2.0A) (25°C) MINIMUM ATTRACTING VOLTAGE: BELOW 21V (90°C)
  - THERMAL RESISTANCE: AT 100°C, DC30V ELECTRIFY SUCCESSIVELY
  - WEIGHT: 5.5Kg

- COMPRESSOR:
- MODEL: HCS-33
  - CYLINDER: 10-phi 37X30.7
  - DISPLACEMENT: 330cm<sup>3</sup>/rev
  - LEAKAGE TEST: ADDITIONAL TABLE
  - GAS LEAK: 30g/y

- NOTE FOR COMPRESSOR INSTALLATION:
- INCLINATION AT INSTALLATION SHOULD BE < 15° C IN LATERAL DIRECTION < 5° C FOR FRONT LIFTING; AND NO LIFTING FOR BACKSIDE;
  - DURING TRANSPORTATION, COMPRESSOR SHOULD NOT BY INCLINED BY 45° IN BOTH LATERAL AND LONGITUDINAL DORECTIONS; BEFORE INSTALLATION, COMPRESSOR SHOULD BE PLACED HORIZONTALLY FOR MORE THAN 10MINUTES;
  - REQUIREMENTS FOR THE BOLT TORSIONS:  
FIXED BRACKET BOLT: 36-50N.M  
FIXED LINKER BOLT: 20-24N.M

| ITEM               | UNIT                           | HIGH PRESSURE SIDE | LOW PRESSURE SIDE              |
|--------------------|--------------------------------|--------------------|--------------------------------|
|                    |                                | AIRPROOF PRESSURE  | MPa<br>(Kgf/cm <sup>2</sup> G) |
| RESISTANT PRESSURE | MPa<br>(Kgf/cm <sup>2</sup> G) | 4.4<br>(45)        | 2.2<br>(22.5)                  |



|    |    |   |    |    |    |    |          |    |    |               |     |             |  |  |
|----|----|---|----|----|----|----|----------|----|----|---------------|-----|-------------|--|--|
|    |    |   |    |    |    |    |          |    |    | HCS-33        |     | HZL         |  |  |
|    |    |   |    |    |    |    |          |    |    | COMP ASSEMBLY |     | 305160-1000 |  |  |
| 图号 | 01 | 7 | 规格 | 符合 | 标准 | 日期 | 09-02-06 | 设计 | 审核 | 比例            | 1:1 |             |  |  |
| 工艺 |    |   |    |    |    |    |          |    |    |               |     |             |  |  |