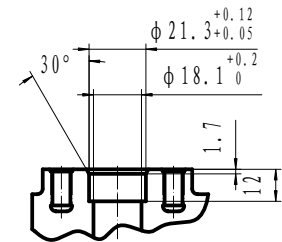
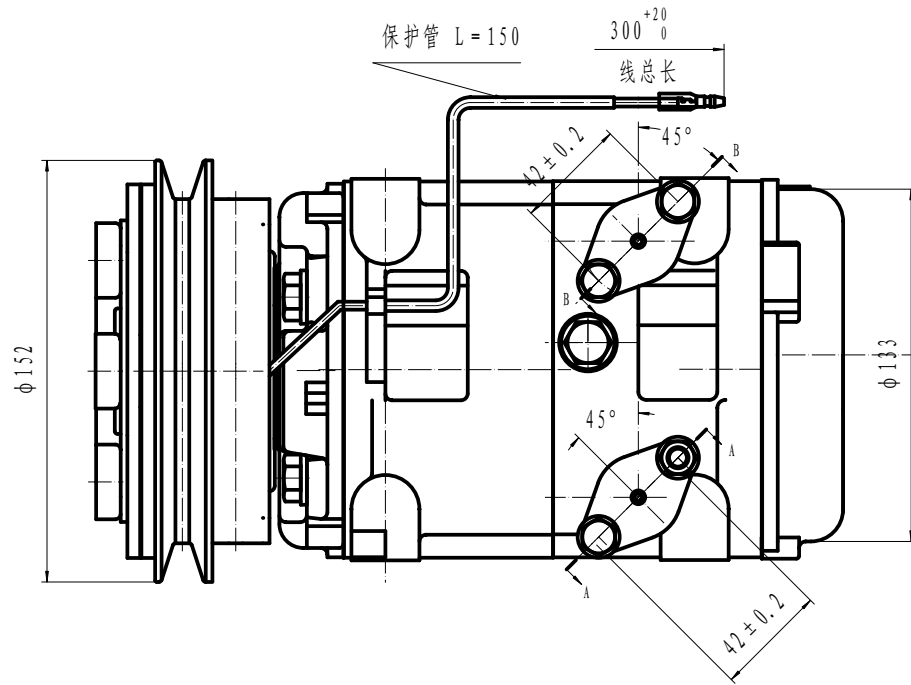


断面 A-A



断面 B-B



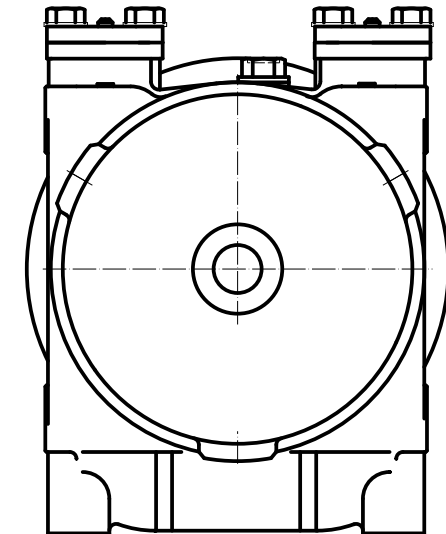
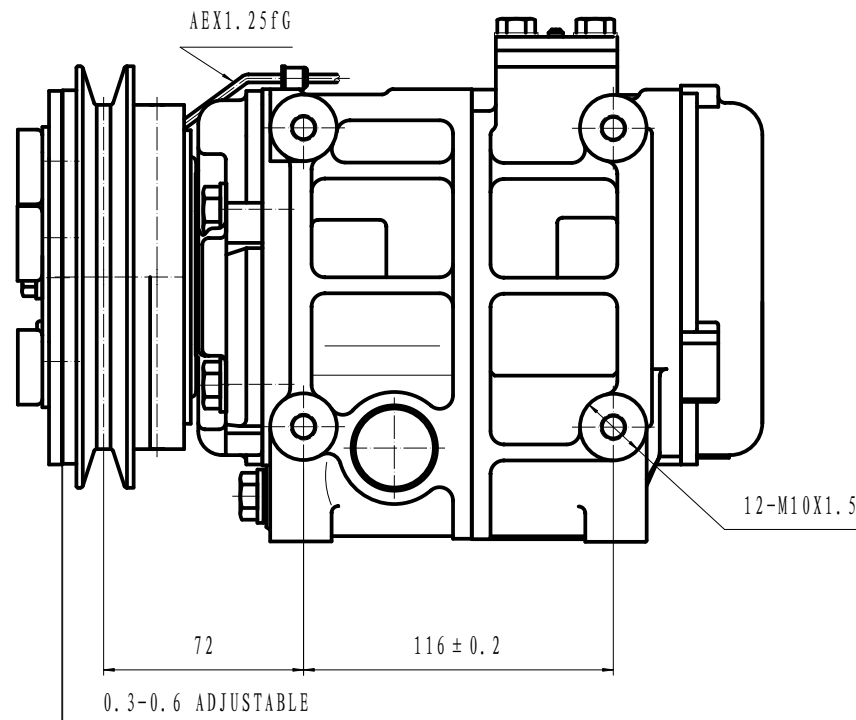
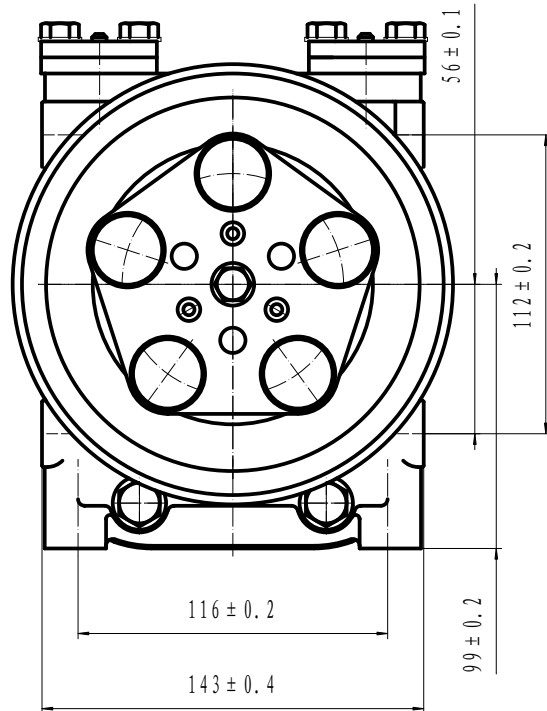
- COMPRESSOR ASSY:
1. OPERATING SPEED: 700~5000r/min (MAXIMUM SPEED 6000r/min)
 2. DIRECTION OF ROTATION: CLOCK WISE
 3. WEIGHT: 15.5kg
 4. REFRIGERANT: HFC-134a
 5. LUBRICANT: PAG 500TMcm²
 6. WEIGHT: 9.5kg (WITHOUT OIL)
- COMPRESSOR:
1. MODEL: HCS-33
 2. CYLINDER: 10-φ37X30.7
 3. DISPLACEMENT: 330cm³/rev
 4. LEAKAGE TEST: ADDITIONAL TABLE
 5. gas Leak: 30g/y

- MAGNETIC CLUTCH:
1. RATED VOLTAGE: DC 24V
 2. SHAPE OF THE BELT: 1A
 3. STATIC TORSION: ABOVE 78N.m (8kgf.m)
 4. WATTAGE: 48W (DC24V2.0A) (25° C) MINIMUM ATTRACTING VOLTAGE: BELOW 21V (90° C)
 5. THERMAL RESISTANCE: AT100° C, DC30V ELECTRICITY SUCCESSIVELY
 6. WEIGHT: 5.5kg

NOTE FOR COMPRESSOR INSTALLATION:

1. INCLINATION AT INSTALLATION SHOULD BE <15° IN LATERAL DIRECTION; <5° FOR FRONT LIFTING; AND NO LIFTING FOR BACKSIDE;
2. DURING TRANSPORTATION, COMPRESSOR SHOULD NOT BE INCLINED BY 45° IN BOTH LATERAL AND LONGITUDINAL DIRECTIONS; BEFORE INSTALLATION, COMPRESSOR SHOULD BE PLACED HORIZONTALLY FOR MORE THAN 10 MINUTES;
3. REQUIREMENTS FOR THE BOLT TORSIONS:
FIXED BRACKET BOLT: 36-50N.M
FIXED LINKER BOLT: 20-24N.M

ITEM	UNIT	HIGH PRESSURE	LOW PRESSURE
		SIDE	SIDE
AIRPROOF PRESSURE	MPa (KgF/cm ² G)	2.9 (30)	1.5 (15)
RESISTANT PRESSURE	MPa (KgF/cm ² G)	4.4 (45)	2.2 (22.5)



						HCS-33		HZL	
图号	01	7	图名	压缩机	图号	09-02-06	图例	比例	1:1
图例									
图例									
						COMP ASSEMBLY		305160-1010	