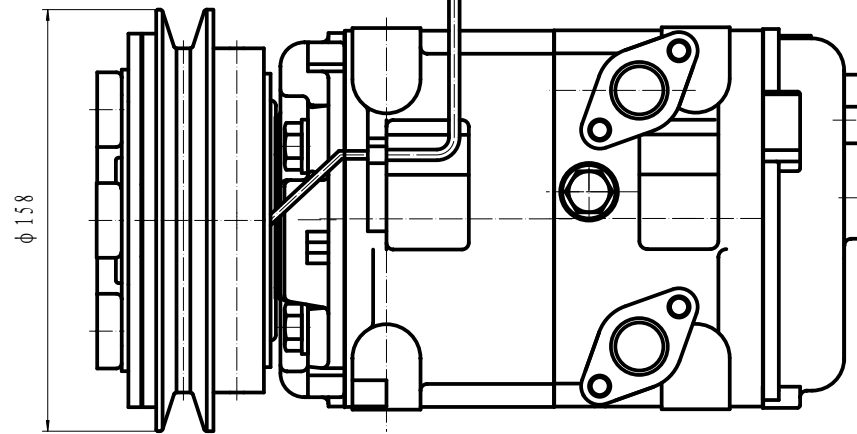


A-A剖面

PROTECTIVE CORD LENGTH 150

300⁺²⁰₀
TOTAL WIRE LENGTH



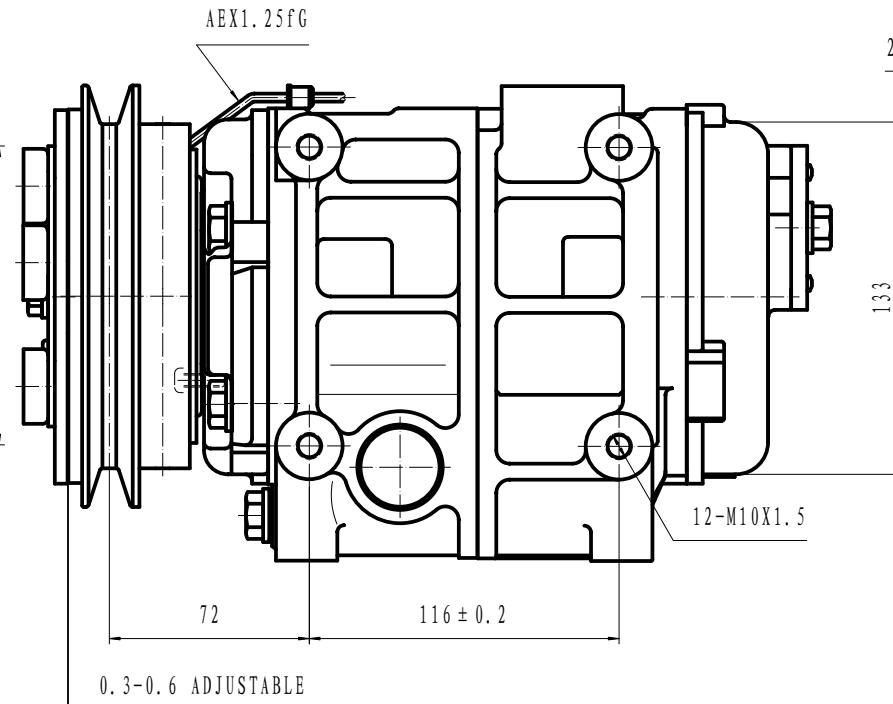
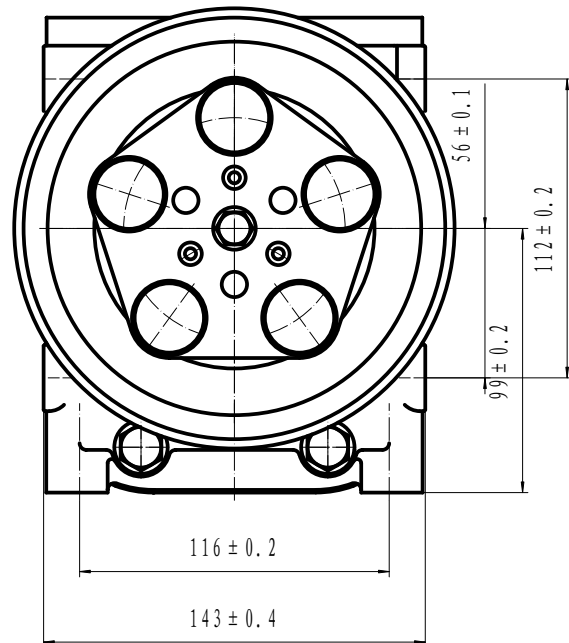
- COMPRESSOR ASSY:
1. OPERATING SPEED: 700~5000r/min (MAXIMUM SPEED 6000r/min)
 2. DIRECTION OF ROTATION: CLOCK WISE
 3. WEIGHT: 15.5kg
 4. REFRIGERANT: HFC-134a
 5. LUBRICANT: PAG 500TMcm¹
 6. WEIGHT: 9.5kg(WITHOUT OIL)

- MAGNETIC CLUTCH:
1. RATED VOLTAGE: DC 12V
 2. SHAPE OF THE BELT: 1B
 3. STATIC TORSION: ABOVE 78N.m (8kgf.m)
 4. WATTAGE: 48W (DC24V2.0A) (25° C)
MINIMUM ATTRACTING VOLTAGE: BELOW 9V (90° C)
 5. THERMAL RESISTANCE: AT100° C, DC30V ELECTRICITY SUCCESSIVELY
 6. WEIGHT: 5.5kg

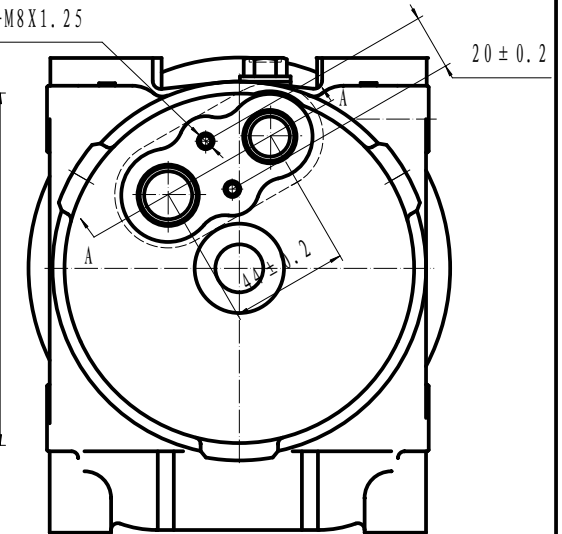
- COMPRESSOR:
1. MODEL: HCS-33
 2. CYLINDER: 10- $\phi 37 \times 30.7$
 3. DISPLACEMENT: 330cm³/rev
 4. LEAKAGE TEST: ADDITIONAL TABLE
 5. GAS LEAK: 30g/y

- NOTE FOR COMPRESSOR INSTALLATION:
1. INCLINATION AT INSTALLATION SHOULD BE < 15° IN LATERAL DIRECTION; < 5° FOR FRONT LIFTING; L AND LIFTING FOR BACKSIDE;
 2. DURING TRANSPORTATION, COMPRESSOR SHOULD NOT BE INCLINED BY 45° IN BOTH LATERAL AND LONGITUDINAL DIRECTIONS; BEFORE INSTALLATION, COMPRESSOR SHOULD BE Lpaced HORIZONTALLY FOR MORE THAN 10 MINUTES;
 3. REQUIREMENTS FOR THE BOLT TORSIONS:
FIXED BRACKET BOLT: 36-50N.M
FIXED LINKER BOLT: 20-24N.M

ITEM	UNIT	HIGH PRESSURE SIDE	LOW PRESSURE SIDE
AIRPROOF PRESSURE	MPa	2.9	1.5
	(Kgf/cm ² G)	(30)	(15)
RESISTANT PRESSURE	MPa	4.4	2.2
	(Kgf/cm ² G)	(45)	(22.5)



2-M8X1.25



										HCS-33		HZL		
										COMP ASSEMBLY		305160-2100		
图号	规格	单位	数量	备注	日期	设计	审核	批准	日期	比例				
01	7	张	1	张永胜	09-02-04					1:1				
工艺	检验	材料	热处理	涂装	包装	运输	仓储	销售	服务					