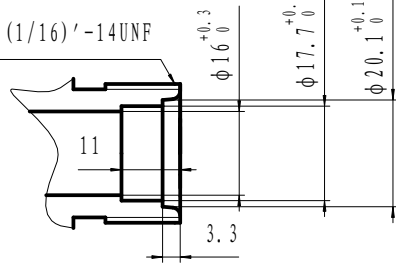
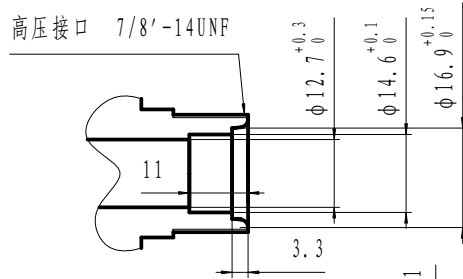


低压接口 1(1/16)'-14UNF

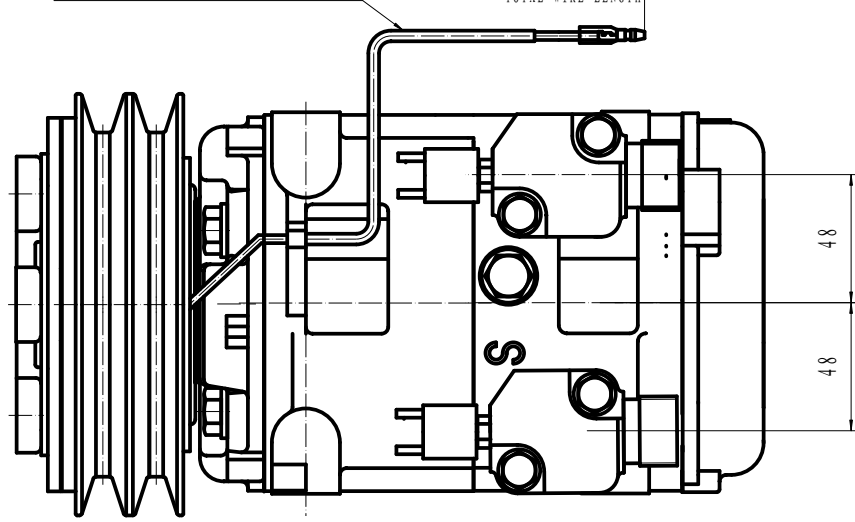


高压接口 7/8'-14UNF

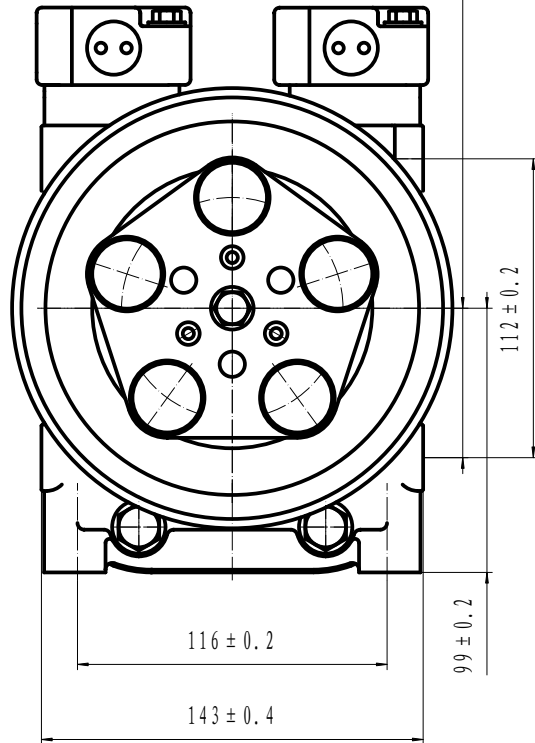
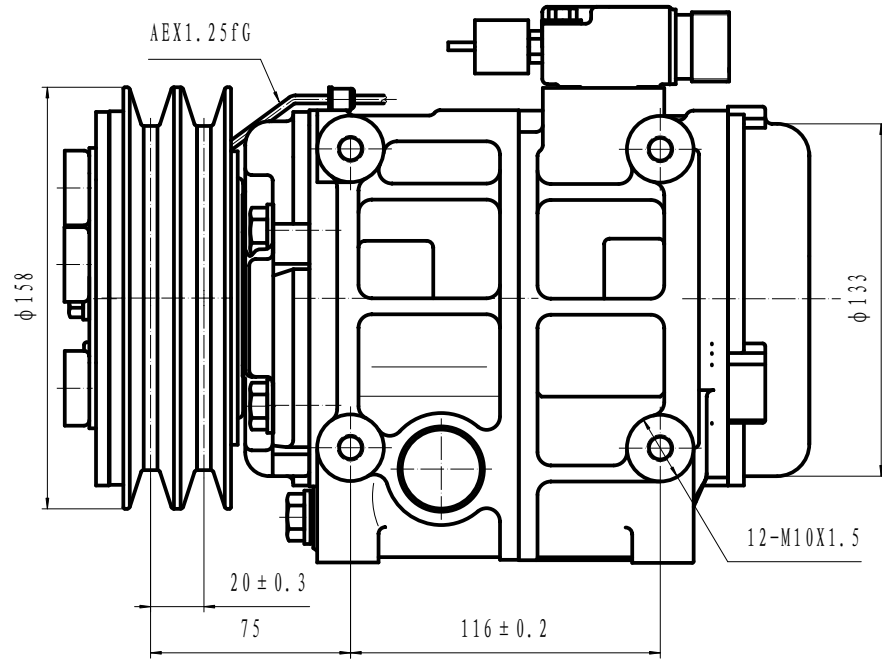


PROTECTIVE CORD LENGTH 150

TOTAL WIRE LENGTH
300
+20
0



AEX1.25FG



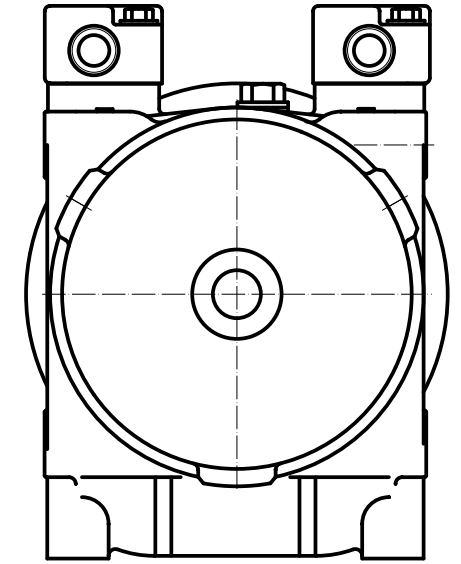
- COMPRESSOR ASSY:
1. OPERATING SPEED: 700~5000r/min (MAXIMUM SPEED 6000r/min)
 2. DIRECTION OF ROTATION: CLOCK WISE
 3. WEIGHT: 15.5kg
 4. REFRIGERANT: HFC-134a
 5. LUBRICANT: PAG 500TMcm²
 6. WEIGHT: 9.5kg(WITHOUT OIL)
- MAGNETIC CLUTCH:
1. RATED VOLTAGE: DC 24V
 2. SHAPE OF THE BELT: 2B
 3. STATIC TORSION: ABOVE 78N.m (8kgf.m)
 4. WATTAGE: 48W (DC24V, 0A) (25°C)
 - MINIMUM ATTRACTING VOLTAGE: BELOW 21V (90°C)
 5. THERMAL RESISTANCE: AT 100°C, DC30V ELECTRIFY SUCCESSIVELY
 6. WEIGHT: 5.5kg

- COMPRESSOR:
1. MODEL: HCS-33
 2. CYLINDER: 10-φ37X30.7
 3. DISPLACEMENT: 330cm³/rev
 4. LEAKAGE TEST: ADDITIONAL TABLE
 5. PRESSURE SWITCH:
 - D: 2.5MPa
 - S: 0.03MPa

NOTE FOR COMPRESSOR INSTALLATION:

1. INCLINATION AT INSTALLATION SHOULD BE < 15° IN LATERAL DIRECTION; < 5° FOR FRONT LIFTING; AND NO LIFTING FOR BACKSIDE;
2. DURING TRANSPORTATION, COMPRESSOR SHOULD NOT BE INCLINED BY 45° IN BOTH LATERAL AND LONGITUDINAL DIRECTIONS; BEFORE INSTALLATION, COMPRESSOR SHOULD BE PLACED HORIZONTALLY FOR MORE THAN 10 MINUTES;
3. REQUIREMENTS FOR THE BOLT TORSIONS:
 - FIXED BRACKET BOLT: 36-50N.M
 - FIXED LINKER BOLT: 20-24N.M

ITEM	UNIT	HIGH PRESSURE	LOW PRESSURE
		SIDE	SIDE
AIRPROOF	MPa	2.9	1.5
PRESSURE	(Kg _f /cm ² G)	(30)	(15)
RESISTANT	MPa	4.4	2.2
PRESSURE	(Kg _f /cm ² G)	(45)	(22.5)



										HCS-33		HZL	
												COMP ASSEMBLY	
												305160-3000	