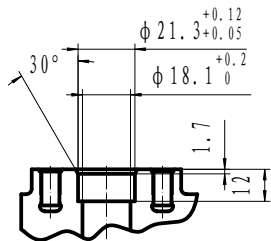
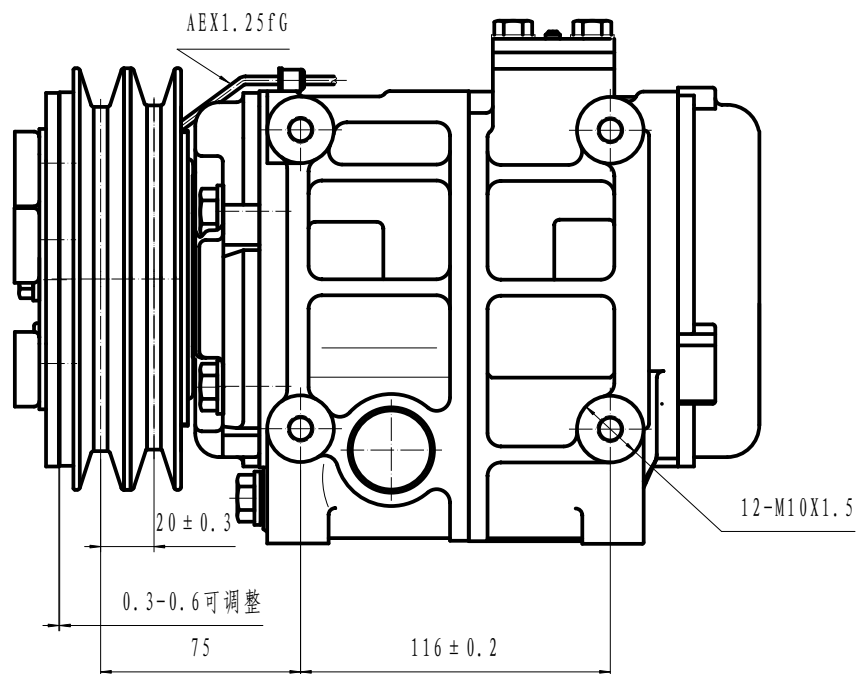
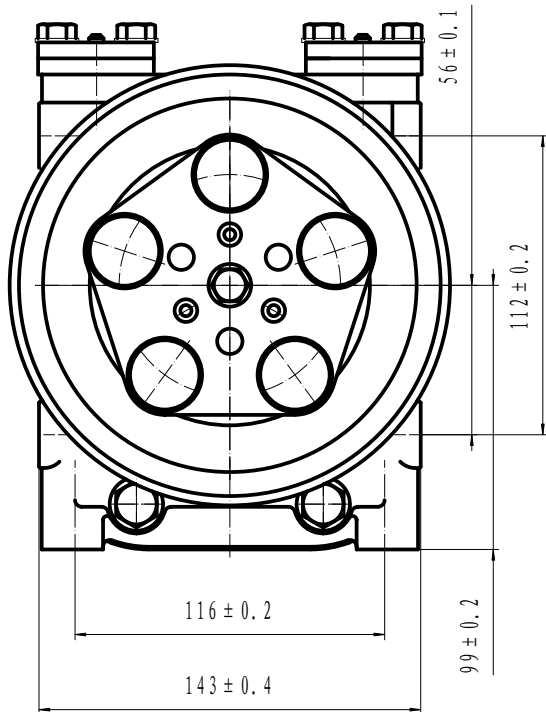
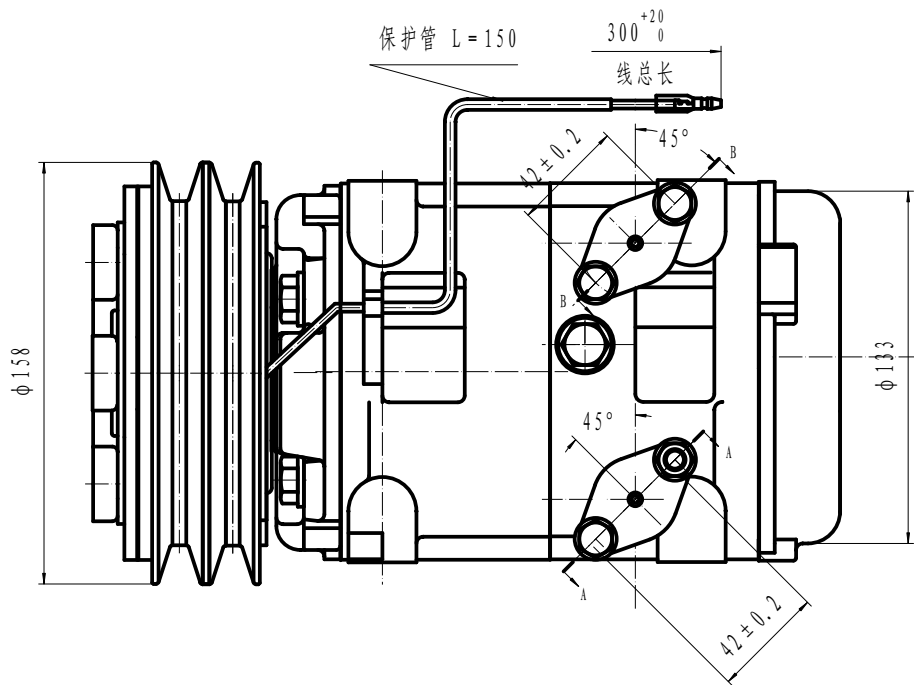


断面 A-A



断面 B-B

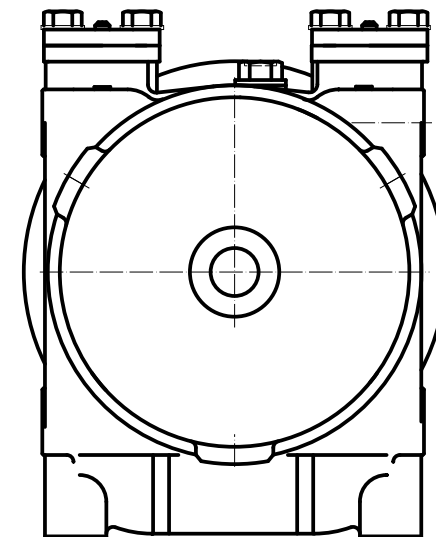


- COMPRESSOR ASSY:
1. OPERATING SPEED: 700-5000r/min (MAXIMUM SPEED 6000r/min)
  2. DIRECTION OF ROTATION: CLOCK WISE
  3. WEIGHT: 15.5kg
  4. REFRIGERANT: HFC-134a
  5. LUBRICANT: PAG 500<sup>11</sup>cm<sup>3</sup>
  6. WEIGHT: 9.5kg (WITHOUT OIL)
- COMPRESSOR:
1. MODEL: HCS-33
  2. CYLINDER: 10-phi 37X30.7
  3. DISPLACEMENT: 330cm<sup>3</sup>/rev
  4. LEAKAGE TEST: ADDITIONAL TABLE
  5. GAS LEAK: 30g/y

- MAGNETIC CLUTCH:
1. RATED VOLTAGE: DC 24V
  2. SHAPE OF THE BELT: 2B
  3. STATIC TORSION: ABOVE 78N.m (8kgf.m)
  4. WATTAGE: 48W (DC24V, 0A) (25° C)  
MINIMUM ATTRACTING VOLTAGE: BELOW 21V (90° C)
  5. THERMAL RESISTANCE: AT 100° C, DC30V ELECTRIFY SUCCESSIVELY
  6. WEIGHT: 5.5kg

- NOTE FOR COMPRESSOR INSTALLATION:
1. INCLINATION AT INSTALLATION SHOULD BE < 15° IN LATERAL DIRECTION; < 5° FOR FRONT LIFTING; AND NO LIFTING FOR BACKSIDE;
  2. DURING TRANSPORTATION, COMPRESSOR SHOULD NOT BE INCLINED BY 45° IN BOTH LATERAL AND LONGITUDINAL DIRECTIONS; BEFORE INSTALLATION, COMPRESSOR SHOULD BE PLACED HORIZONTALLY FOR MORE THAN 10 MINUTES;
  3. REQUIREMENTS FOR THE BOLT TORSIONS:  
FIXED BRACKET BOLT: 36-50N.M  
FIXED LINKER BOLT: 20-24N.M

ITEM	UNIT	HIGH PRESSURE SIDE	LOW PRESSURE SIDE
AIRPROOF PRESSURE	MPa	2.9	1.5
	(KgF/cm <sup>2</sup> G)	(30)	(15)
RESISTANT PRESSURE	MPa	4.4	2.2
	(KgF/cm <sup>2</sup> G)	(45)	(22.5)



						HCS-33		重庆华之龙汽车制冷系统有限公司	
图号	规格	单位	制图	审核	日期	修改	数量	比例	总装图
图号	规格	单位	制图	审核	日期	修改	数量	比例	
图号	规格	单位	制图	审核	日期	修改	数量	比例	
						1:1		305160-6000	