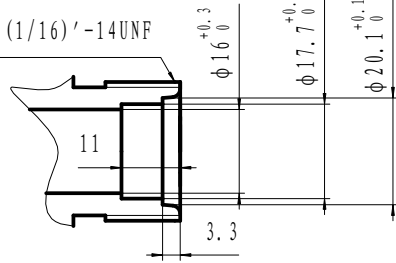
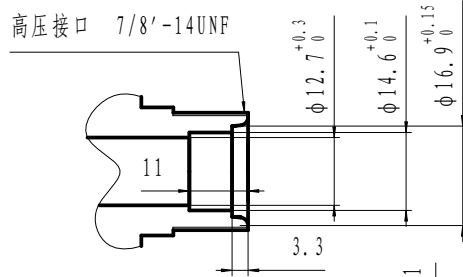


低压接口 1(1/16)'-14UNF

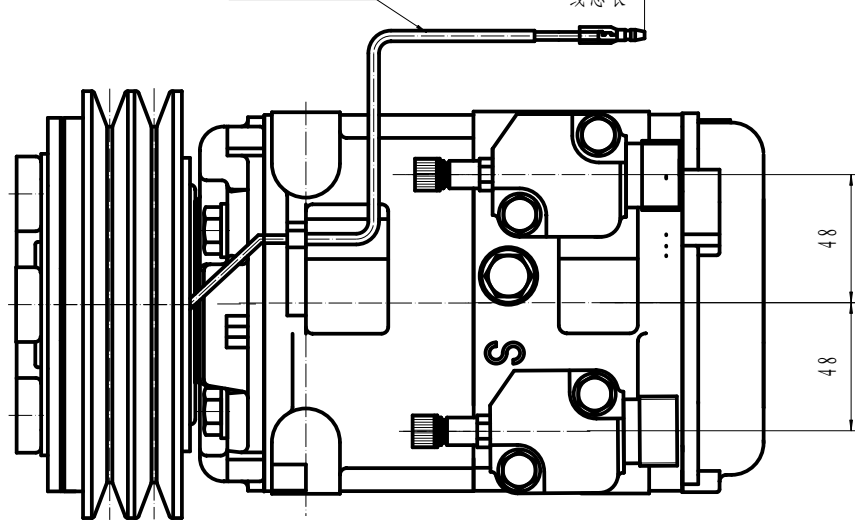


高压接口 7/8'-14UNF

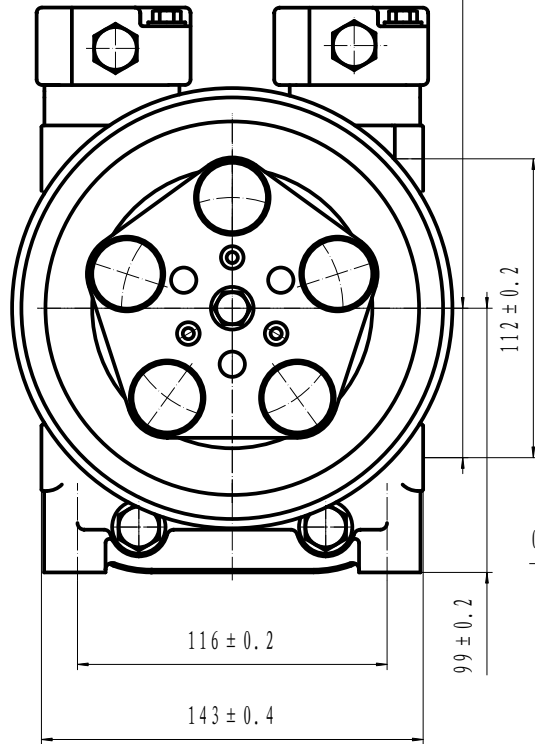
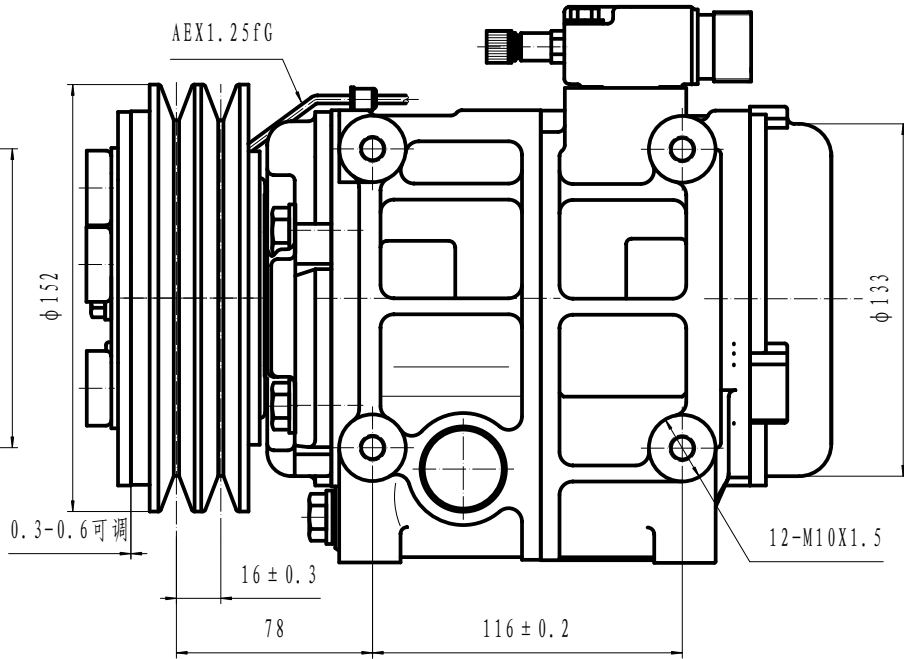


保护管 L = 150

300⁺²⁰₀
线总长



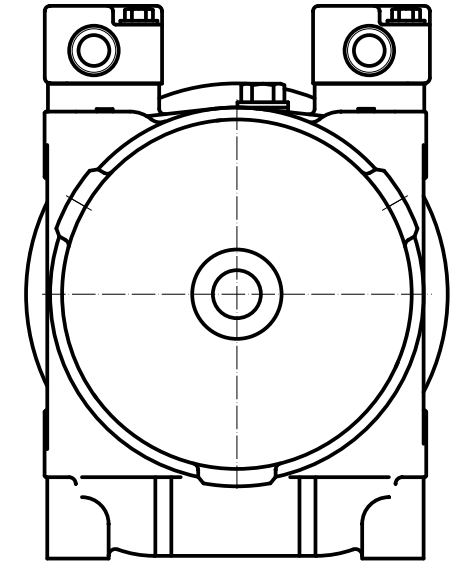
AEX1.25FG



- COMPRESSOR ASSY:
- OPERATING SPEED: 700-5000r/min (MAXIMUM SPEED 6000r/min)
 - DIRECTION OF ROTATION: CLOCK WISE
 - WEIGHT: 15.5kg
 - REFRIGERANT: HFC-134a
 - LUBRICANT: PAG 500⁺cm³
 - WEIGHT: 10.6kg (WITHOUT OIL)
- COMPRESSOR:
- MODEL: HCS-33
 - CYLINDER: 10-φ37X30.7
 - DISPLACEMENT: 330cm³/rev
 - LEAKAGE TEST: ADDITIONAL TABLE
 - GAX LEAK: 30g/y
- MAGNETIC CLUTCH:
- RATED VOLTAGE: DC 12V
 - SHAPE OF THE BELT: 2A
 - STATIC TORSION: ABOVE 78N.m (8kgf.m)
 - WATTAGE: 48W (DC24V2.0A) (25° C)
- MINIMUM ATTRACTING VOLTAGE: BELOW 9V (90° C)
- THERMAL RESISTANCE: AT 100° C, DC30V ELECTRIFY SUCCESSIVELY
 - WEIGHT: 5.5kg

- NOTE FOR COMPRESSOR INSTALLATION:
- INCLINATION AT INSTALLATION SHOULD BE < 15° IN LATERAL DIRECTION; < 5° FOR FRONT LIFTING; AND NO LIFTING FOR BACKSIDE;
 - DURING TRANSPORTATION, COMPRESSOR SHOULD NOT BE INCLINED BY 45° IN BOTH LATERAL AND LONGITUDINAL DIRECTIONS; BEFORE INSTALLATION, COMPRESSOR SHOULD BE PLACED HORIZONTALLY FOR MORE THAN 10 MINUTES;
 - REQUIREMENTS FOR THE BOLT TORSIONS:
FIXED BRACKET BOLT: 36-50N.M
FIXED LINKER BOLT: 20-24N.M

ITEN	UNIT	HIGH PRESSURE SIDE	LOW PRESSURE SIDE
AIRPROOF PRESSURE	MPa (Kg _f /cm ² G)	2.9 (30)	1.5 (15)
RESISTANT PRESSURE	MPa (Kg _f /cm ² G)	4.4 (45)	2.2 (22.5)



HCS-33										重庆华之龙汽车制冷设备有限公司	
图号	规格	单位	制图	审核	日期	材料	数量	比例	总装图		
图号	规格	单位	制图	审核	日期	材料	数量	比例	305160-8010		
图号	规格	单位	制图	审核	日期	材料	数量	比例	305160-8010		