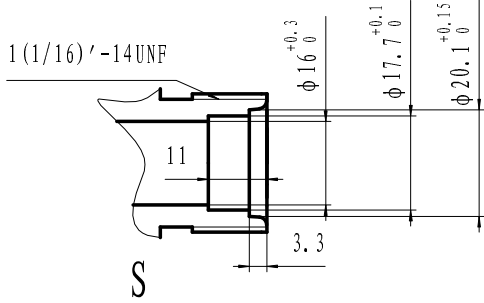
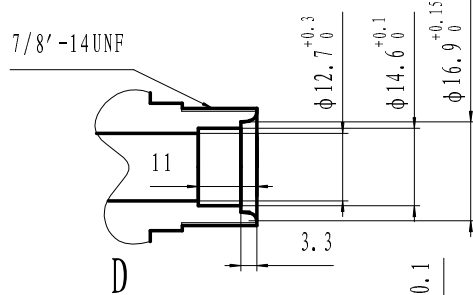


1 (1/16)' -14UNF

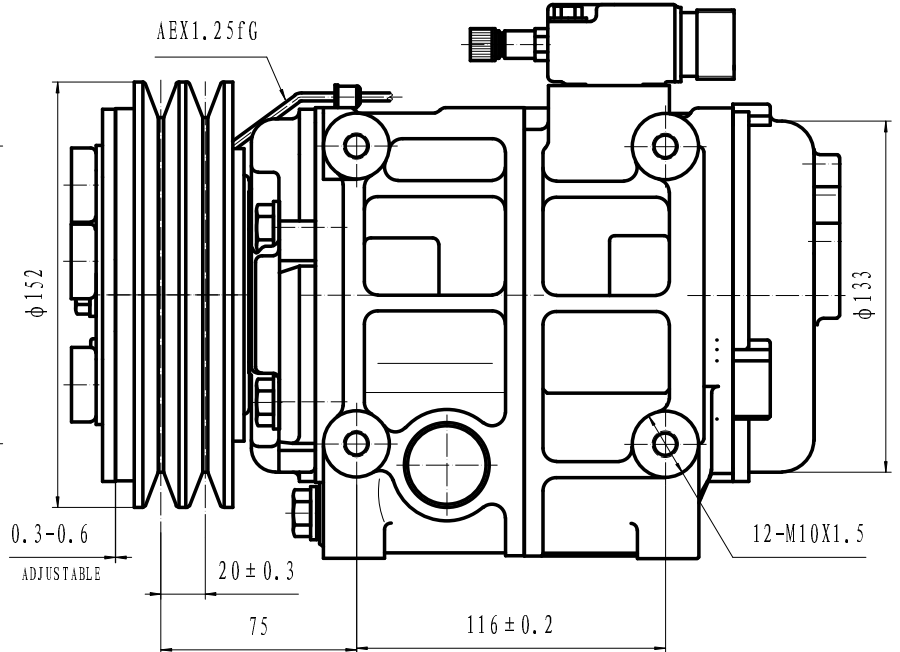
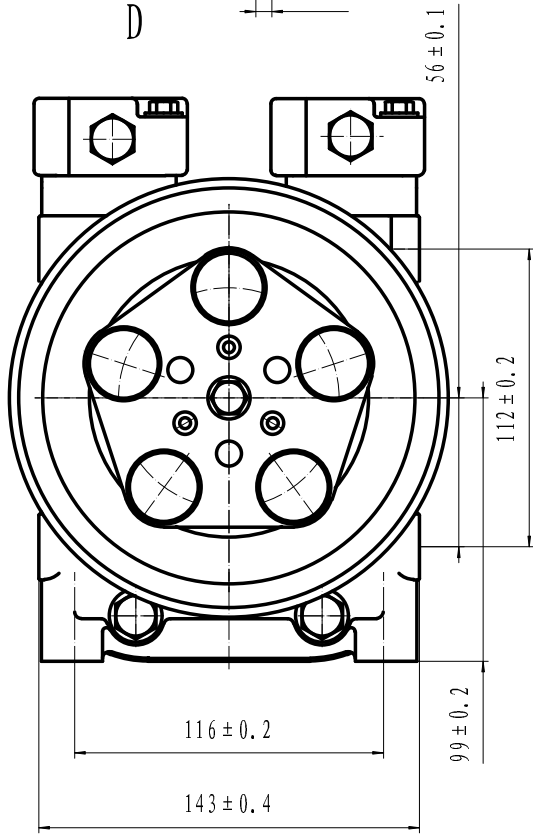
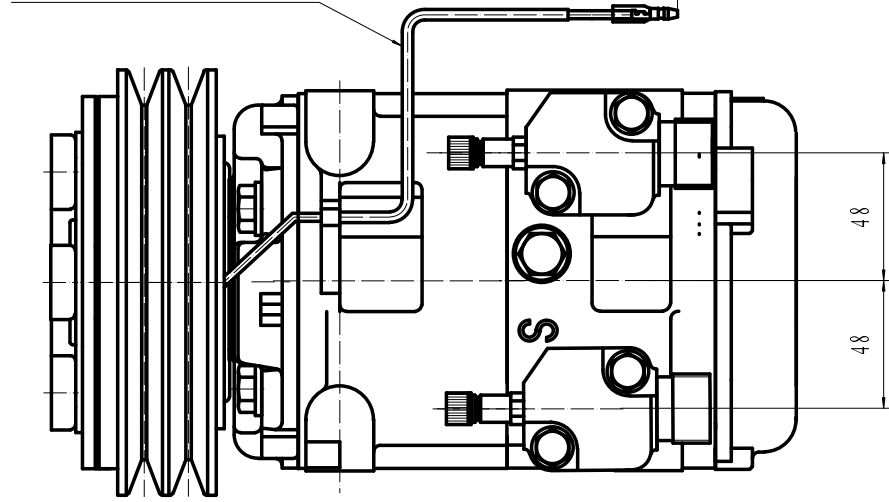


7/8' -14UNF



PROTECTIVE CORD LENGTH 150

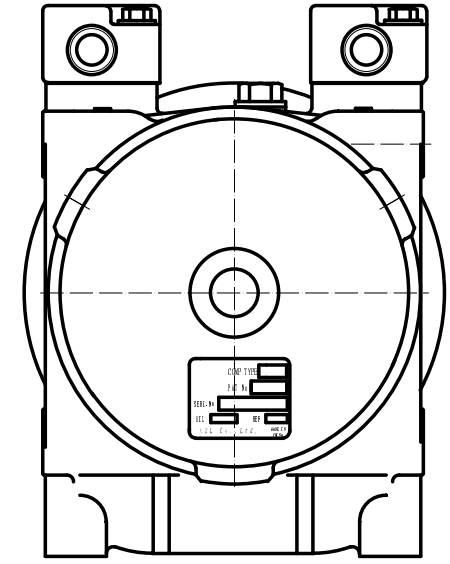
TOTAL WIRE LENGTH 300⁺²⁰₀



- COMPRESSOR ASSY:
- OPERATING SPEED: 700~5000r/min (MAXIMUM SPEED 6000r/min)
 - DIRECTION OF ROTATION: CLOCK WISE
 - WEIGHT: 15.5kg
 - REFRIGERANT: HFC-134a
 - LUBRICANT: PAG 500^{CM}
 - WEIGHT: 10.6g(WITHOUT OIL)
- MAGNETIC CLUTCH:
- RATED VOLTAGE: DC 12V
 - SHAPE OF THE BELT: 2A
 - STATIC TORSION: ABOVE 78N.m (8kgf.m)
 - WATTAGE: 48W (DC12V, 4A) (25° C) MINIMUM ATTRACTING VOLTAGE: ABOVE 9V (90° C)
 - THERMAL RESISTANCE: AT 100° C, DC30V ELECTRIFY SUCCESSIVELY
 - WEIGHT: 5.5kg

- COMPRESSOR:
- MODEL: HCS-33
 - CYLINDER: 10-φ 37X30.7
 - DISPLACEMENT: 330cm³/rev
 - LEAKAGE TEST: ADDITIONAL TABLE
 - GAS LEAK: < 30g/year
- NOTE FOR COMPRESSOR INSTALLATION:
- INCLINATION AT INSTALLATION SHOULD BE < 15° IN LATERAL DIRECTION; < 5° FOR FRONT LIFTING; AND NO LIFTING FOR REAR SIDE;
 - DURING TRANSPORTATION, COMPRESSOR SHOULD NOT BE INCLINED BY 45° IN BOTH LATERAL AND LONGITUDINAL DIRECTIONS; BEFORE INSTALLATION, COMPRESSOR SHOULD BE PLACED HORIZONTALLY FOR MORE THAN 10 MINUTES;
 - REQUIREMENTS FOR THE BOLT TORSIONS:
FIXED BRACKET BOLT: 36-50N.m
FIXED LINKER BOLT: 20-24N.m

ITEN	UNIT	HIGH PRESSURE SIDE	LOW PRESSURE SIDE
AIRPROOF PRESSURE	MPa (Kgf/cm ² G)	2.9 (30)	1.5 (15)
RESISTANT PRESSURE	MPa (Kgf/cm ² G)	4.4 (45)	2.2 (22.5)



										HCS-33		HZL	
												COMP ASSEMBLY	
												1:1	
												305160-8200	