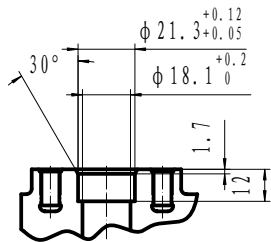
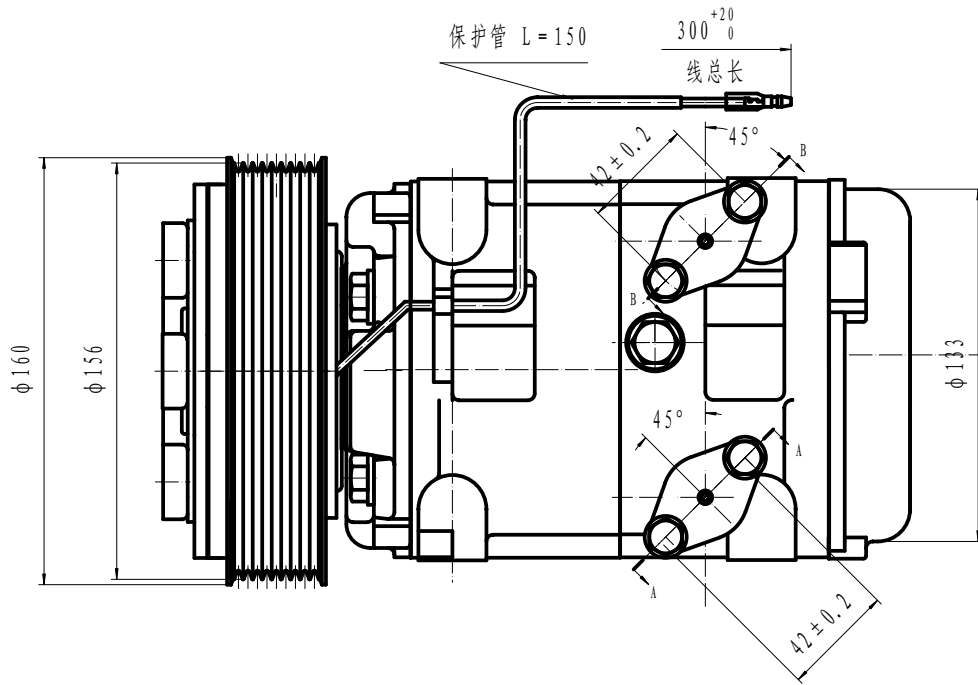


断面 A-A



断面 B-B



COMPRESSOR ASSY:

1. OPERATING SPEED: 700-5000r/min (MAXIMUM SPEED 6000r/min)
2. DIRECTION OF ROTATION: CLOCK WISE
3. WEIGHT: 15.5Kg
4. REFRIGERANT: HFC-134a
5. LUBRICANT: PAG 500TMcm³
6. WEIGHT: 9.5Kg(WITHOUT OIL)

MAGNETIC CLUTCH:

1. RATED VOLTAGE: DC 24V
2. SHAPE OF THE BELT: PV9
3. STATIC TORSION: ABOVE 78N.m (8kgf.m)
4. WATTAGE: 48W (DC24V2.0A) (25° C)
5. THERMAL RESISTANCE: AT 100° C, DC30V ELECTRIFY SUCCESSIVELY
6. WEIGHT: 5.5Kg

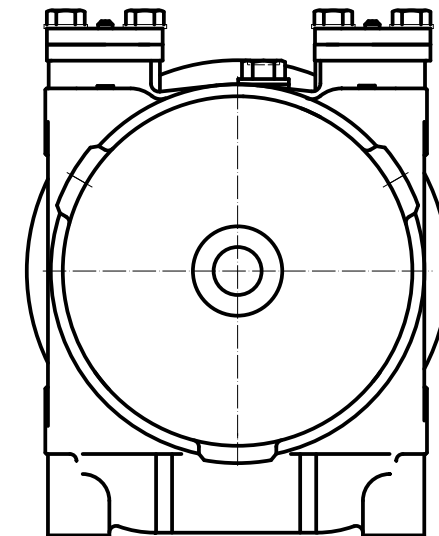
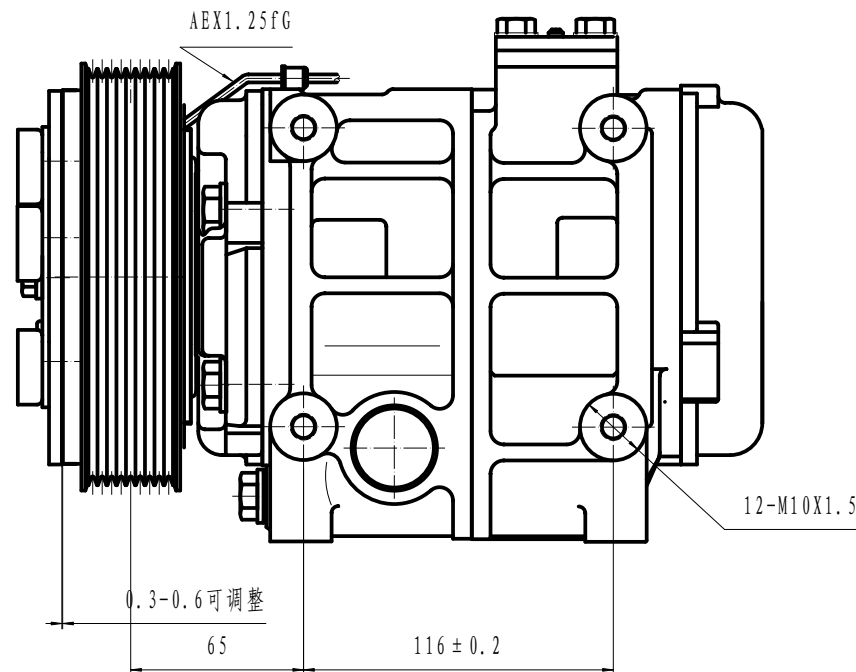
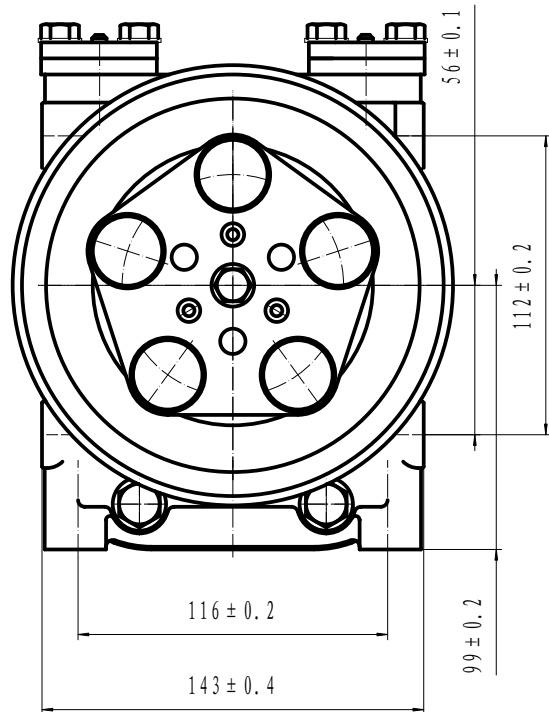
COMPRESSOR:

1. MODEL: HCS-33
2. CYLINDER: 10-phi37X30.7
3. DISPLACEMENT: 330cm³/rev
4. LEAKAGE TEST: ADDITIONAL TABLE
5. GAS LEAK: 30g/y

NOTE FOR COMPRESSOR INSTALLATION:

1. INCLINATION AT INSTALLATION SHOULD BE < 15° IN LATERAL DIRECTION; < 5° FOR FRONT LIFTING; AND NO LIFTING FOR BACKSIDE;
2. DURING TRANSPORTATION, COMPRESSOR SHOULD NOT BE INCLINED BY 45° IN BOTH LATERAL AND LONGITUDINAL DIRECTIONS; BEFORE INSTALLATION, COMPRESSOR SHOULD BE PLACED HORIZONTALLY FOR MORE THAN 10 MINUTES;
3. REQUIREMENTS FOR THE BOLT TORSIONS:
FIXED BRACKET BOLT: 36-50N.M
FIXED LINKER BOLT: 20-24N.M

ITEM	UNIT	HIGH PRESSURE SIDE	LOW PRESSURE SIDE
AIRPROOF PRESSURE	MPa	2.9	1.5
	(kgf/cm ²)	(30)	(15)
RESISTANT PRESSURE	MPa	4.4	2.2
	(kgf/cm ²)	(45)	(22.5)



						HCS-33		重庆华之龙汽车制动系统有限公司	
图号	规格	单位	更改文件号	备注	日期	修改标记	数量	比例	总装图
图号	规格	单位	更改文件号	备注	日期	修改标记	数量	比例	
图号	规格	单位	更改文件号	备注	日期	修改标记	数量	比例	
						1:1		305160-9000	