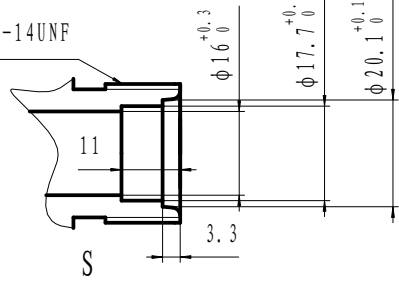
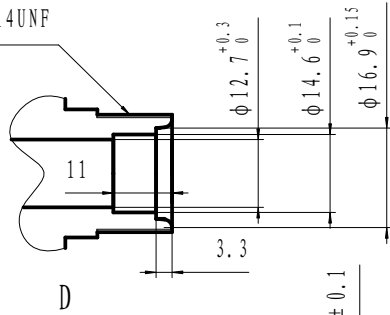


1 (1/16)' -14UNF

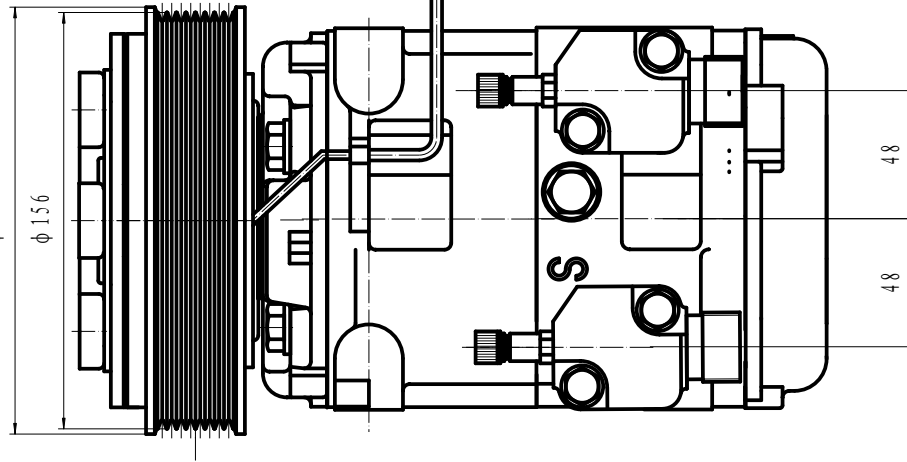


7/8' -14UNF



PROTECTIVE CORD LENGTH L=150

TOTAL WIRE LENGTH
300⁺²⁰₀



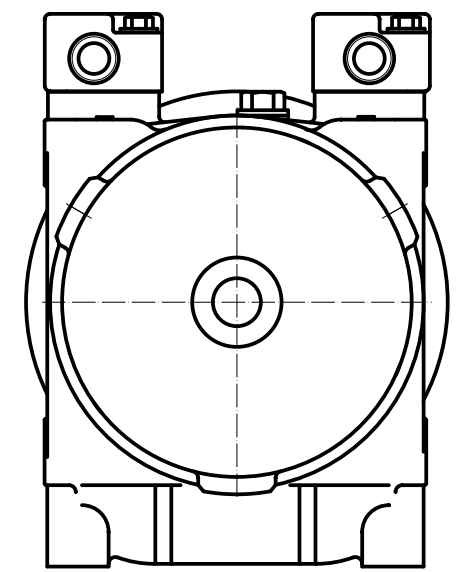
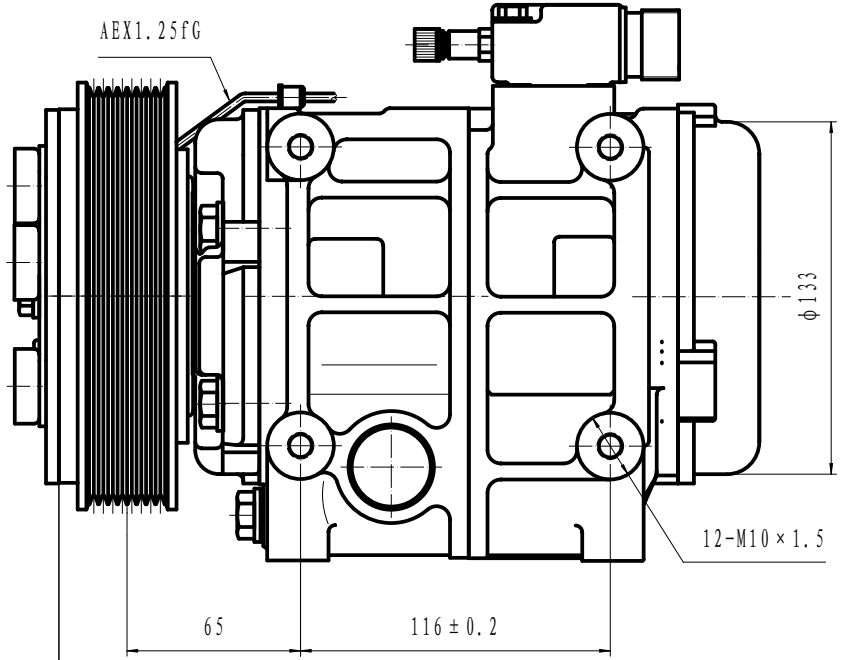
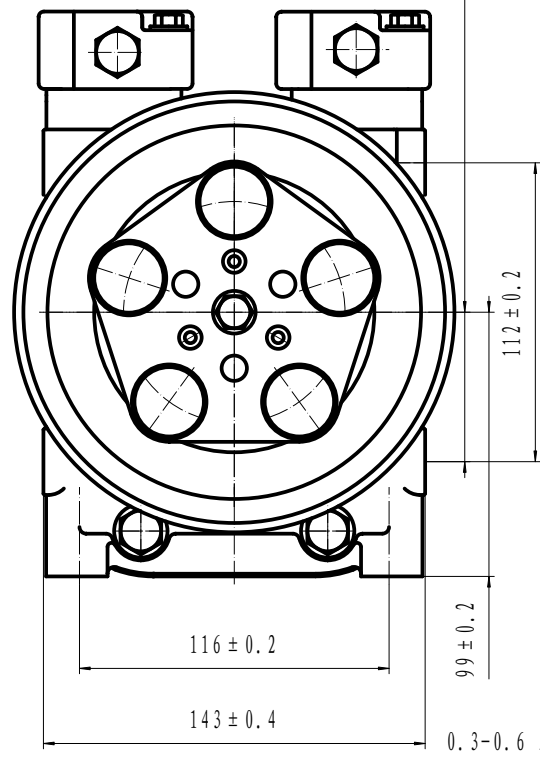
- COMPRESSOR ASSY:
- OPERATING SPEED: 700-5000r/min (MAXIMUM SPEED 6000r/min)
 - DIRECTION OF ROTATION: CLOCK WISE
 - WEIGHT: 15.5kg
 - REFRIGERANT: HFC-134a
 - LUBRICANT: PAG 500TMcm²
 - WEIGHT: 10.6kg (WITHOUT OIL)
- MAGNETIC CLUTCH:
- RATED VOLTAGE: DC 24V
 - SHAPE OF THE BELT: 8PK
 - STATIC TORSION: ABOVE 78N.m (8kgf.m)
 - WATTAGE: 48W (DC24V, 2A) (25° C)
 - MINIMUM ATTRACTING VOLTAGE: ABOVE 21V (90° C)
 - THERMAL RESISTANCE: AT 100° C, DC30V ELECTRICITY SUCCESSIVELY
 - WEIGHT: 3.5kg

- COMPRESSOR:
- MODEL: HCS-33
 - CYLINDER: 10-φ37X30.7
 - DISPLACEMENT: 330cm³/rev
 - LEAKAGE TEST: ADDITIONAL TABLE
 - GAS LEAK: 30g/y

NOTE FOR COMPRESSOR INSTALLATION:

- INCLINATION AT INSTALLATION SHOULD BE < 15° IN LATERAL DIRECTION; < 5° FOR FRONT LIFTING; AND NO LIFTING FOR BACKSIDE;
- DURING TRANSPORTATION, COMPRESSOR SHOULD NOT BE INCLINED BY 45° IN BOTH LATERAL AND LONGITUDINAL DIRECTIONS; BEFORE INSTALLATION, COMPRESSOR SHOULD BE PLACED HORIZONTALLY FOR MORE THAN 10 MINUTES;
- REQUIREMENTS FOR THE BOLT TORSIONS:
FIXED BRACKET BOLT: 36-50N.M
FIXED LINKER BOLT: 20-24N.M

ITEM	UNIT	HIGH PRESSURE SIDE	LOW PRESSURE SIDE
AIRPROOF PRESSURE	MPa (Kgf/cm ² G)	2.9 (30)	1.5 (15)
RESISTANT PRESSURE	MPa (Kgf/cm ² G)	4.4 (45)	2.2 (22.5)



				HCS-33		HZL	
1	1	1	1	1	1	1	1
设计	审核	会签	批准	日期	2005.5.3	图号	305160-9500
制图	校对	工艺	材料	比例	1:1	备注	
工号	姓名	姓名	姓名	姓名	姓名	姓名	姓名