

COMPRESSOR ASSY:

1. OPERATING SPEED: 700~4000r/min
(MAXIMUM SPEED 5000r/min)
 2. DIRECTION OF ROTATION: CLOCK WISE
 3. WEIGHT: HFC-134a
 4. REFRIGERANT: PAG 800cc
 5. LUBRICANT: PAG 800cc
- COMPRESSOR:
1. MODEL: HCS-48
 2. CYLINDER: 10- $\phi 42 \times 34.7$
 3. DISPLACEMENT: 478cm³/rev
 4. LEAKAGE TEST: ADDITIONAL TABLE
 5. GAS LEAK: 30g/y

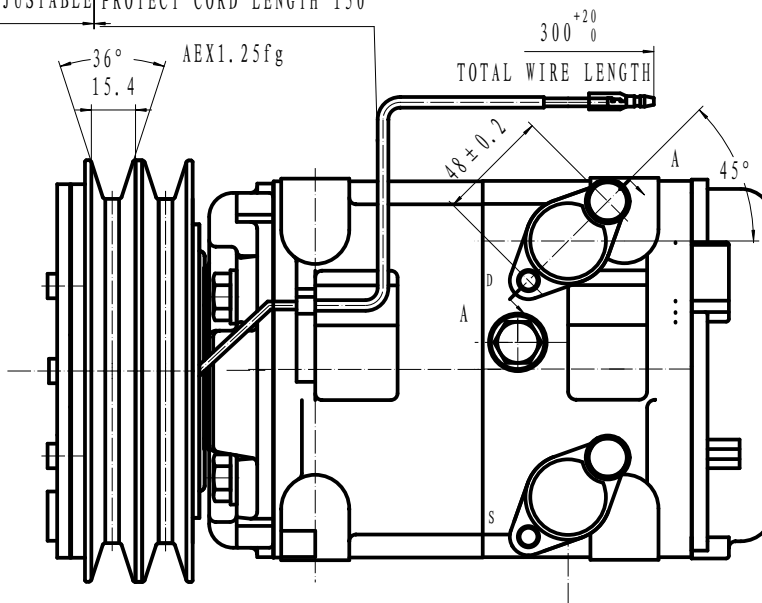
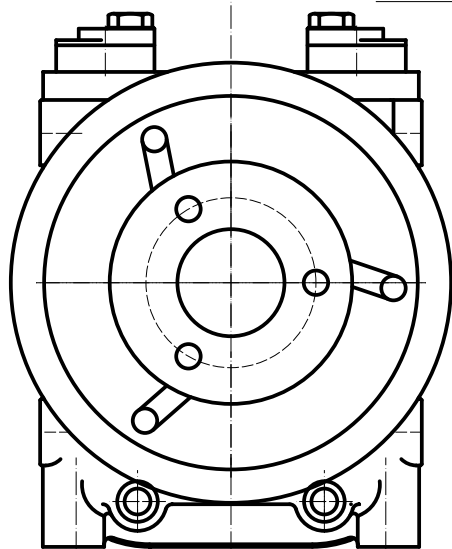
MAGNETIC CLUTCH:

- 1 RATED VOLTAGE: DC 24V
- 2 SHAPE OF THE BELT: 2B
- 3 STATIC TORSION: ABOVE 100N.M (10kgf.m)
- 4 WATTAGE: 48W (DC24V 2A) (25° C)
- 5 THERMAL RESISTANCE: AT 100° C, DC30V ELECTRIFY SUCCESSIVELY
- 6 WEIGHT: 6.5Kg

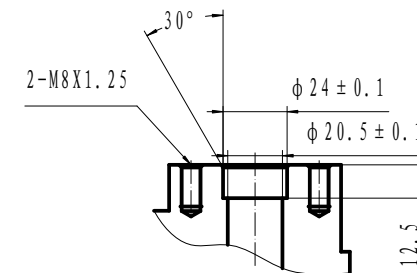
NOTE FOR COMPRESSOR INSTALLATION:

- 1 INCLINATION AT INSTALLATION SHOULD BE < 15° IN LATERAL DIRECTION; < 5° FOR FRONT LIFTING; AND NO LIFTING FOR BACKSIDE;
- 2 DURING TRANSPORTATION, COMPRESSOR SHOULD NOT BE INCLINED BY 45° IN BOTH LATERAL AND LONGITUDINAL DIRECTIONS; BEFORE INSTALLATION, COMPRESSOR SHOULD BE PLACED HORIZONTALY FOR MORE THAN 10 MINUTES;
- 3 REQUIREMENTS FOR THE BOLT TORSIONS:
FIXED BRACKET BOLT: 36-50N.M
FIXED LINKER BOLT: 20-24N.M

0.4-0.8 ADJUSTABLE PROTECT CORD LENGTH 150



ITEM	UNIT	HIGH PRESSURE	LOW PRESSURE
		SIDE	SIDE
AIRPROOF	MPa	2.9	1.5
PRESSURE	(Kgf/cm ² G)	(30)	(15)
RESISTANT	MPa	4.4	2.2
PRESSURE	(Kgf/cm ² G)	(45)	(22.5)



A-A剖面

				HCS-48		HZL	
						COMP ASSEMBLY	
						1:1	
						305160-1500	