

0.4-0.8 ADJUSTABLE

PROTECT CORD LENGTH 150

COMPRESSOR ASSY:

1. OPERATING SPEED: 800-4000r/min (MAXIMUM SPEED 5000r/min)
2. DIRECTION OF ROTATION: CLOCK WISE
3. WEIGHT: 21.5kg
4. REFRIGERANT: HFC-134a
5. LUBRICANT: PAG 800TMcm

MAGNETIC CLUTCH:

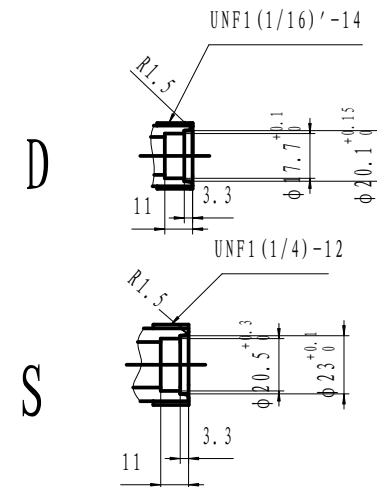
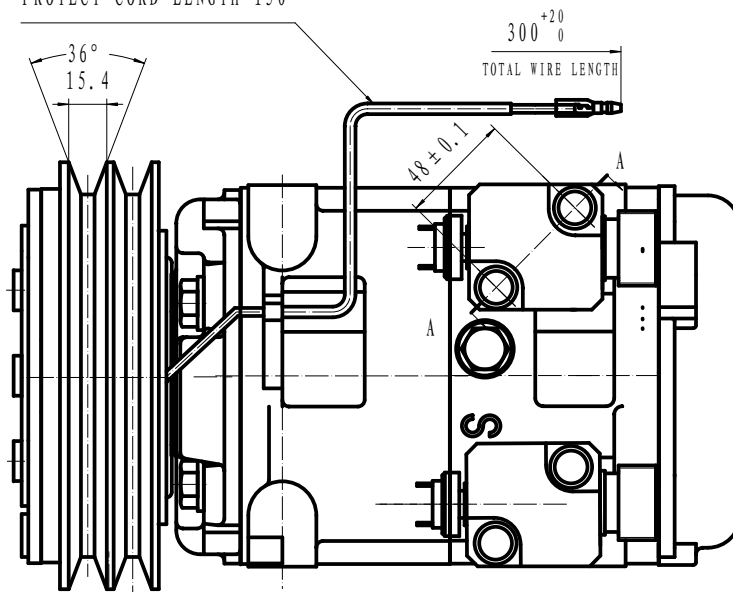
1. RATED VOLTAGE: DC 24V
2. SHAPE OF THE BELT: 2B
3. STATIC TORSION: ABOVE 120N.m (12kgf.m)
4. WATTAGE: 48W (DC24V2.0A) (25°C)
5. THERMAL RESISTANCE: AT 100°C, DC30V ELECTRIFY SUCCESSIVELY
6. WEIGHT: 6.5kg
7. PRESSURE SWITCH: D: 2.5MPa S: 0.3MPa

COMPRESSOR:

1. MODEL: HCS-48
2. CYLINDER: 10-φ42X34.7
3. DISPLACEMENT: 480cm³/rev
4. LEAKAGE TEST: ADDITIONAL TABLE
5. GAS LEAK: 30g/y

NOTE FOR COMPRESSOR INSTALLATION:

1. INCLINATION AT INSTALLATION SHOULD BE < 15° IN LATERAL DIRECTION; < 5° FOR FRONT LIFTING; AND NO LIFTING FOR BACKSIDE;
2. DURING TRANSPORTATION, COMPRESSOR SHOULD NOT BE INCLINED BY 45° IN BOTH LATERAL AND LONGITUDINAL DIRECTIONS; BEFORE INSTALLATION, COMPRESSOR SHOULD BE PLACED HORIZONTALLY FOR MORE THAN 10 MINUTES;
3. REQUIREMENTS FOR THE BOLT TORSIONS: FIXED BRACKET BOLT: 36-50N.M
FIXED LINKER BOLT: 20-24N.M



ITEN	UNIT	HIGH PRESSURE SIDE	LOW PRESSURE SIDE
RESISTANT PRESSURE	MPa (Kg ^f /cm ² G)	4.4 (45)	2.2 (22.5)

		HCS-48		HZL	
				COMP ASSEMBLY	
				1:1	
				305160-1600	