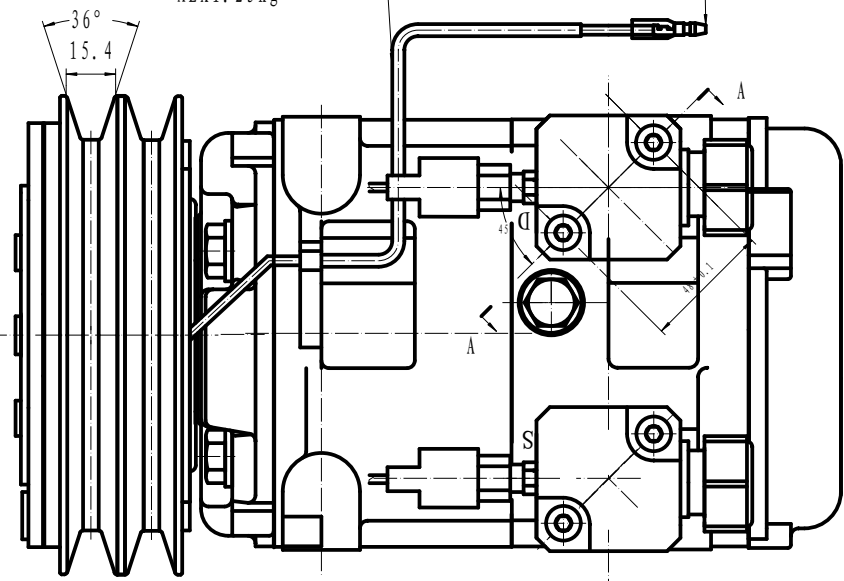


0.4-0.8 ADJUSTABLE PROTECTIVE CORD LENGTH 150

TOTAL WIRE LENGTH

AEX1.25kg



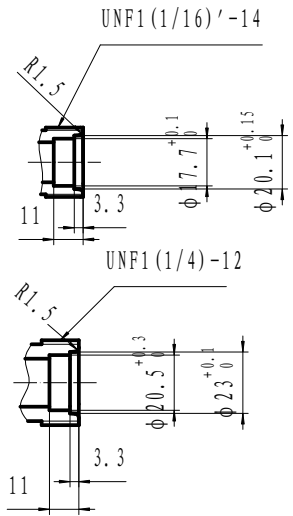
- COMPRESSOR ASST:
- OPERATING SPEED: 800-4000r/min (MAXIMUM SPEED 5000r/min)
 - DIRECTION OF ROTATION: CLOCK WISE
 - WEIGHT: 21.5kg
 - REFRIGERANT: HFC-134a
 - LUBRICANT: PAG 800TMcm³

- MAGNETIC CLUTCH:
- RATED VOLTAGE: DC 24V
 - SHAPE OF THE BELT: 2B
 - STATIC TORSION: ABOVE 120N.m (12kgf.m)
 - WATTAGE: 48W (DC24V2.0A) (25° C)
 - MINIMUM ATTRACTING VOLTAGE: BELOW 21V (90° C)
 - THERMAL RESISTANCE: AT 100° C, DC30V ELECTRIFY SUCCESSIVELY
 - WEIGHT: 6.5kg
 - PRESSURE SWITCH: D: 2.5MPa S: 0.3MPa

- COMPRESSOR:
- MODEL: HCS-48
 - CYLINDER: 10- $\phi 42 \times 34.7$
 - DISPLACEMENT: 480cm³/rev
 - LEAKAGE TEST: ADDITIONAL TABLE
 - GAS LEAK: 30g/y

- NOTE FOR COMPRESSOR INSTALLATION:
- INCLINATION AT INSTALLATION SHOULD BE < 15° IN LATERAL DIRECTION; < 5° FOR FRONT LIFTING; AND NO LIFTING FOR BACKSIDE;
 - DURING TRANSPORTATION, COMPRESSOR SHOULD NOT BE INCLINED BY 45° IN BOTH LATERAL AND LONGITUDINAL DIRECTIONS; BEFORE INSTALLATION, COMPRESSOR SHOULD BE LPAED HORIZONTALLY FOR MORE THAN 10 MINUTES
 - REQUIREMENTS FOR THE BOLT TORSIONS: FIXED BRACKET BOLT: 36-50N.M FIXED LINKER BOLT: 20-24N.M

ITEM	UNIT	HIGH PRESSURE	LOW PRESSURE
		SIDE	SIDE
RESISTANT PRESSURE	MPa	4.4	2.2
	(kgf/cm ² G)	(45)	(22.5)



						HCS-48	HZL
图号	规格	单位	数量	备注	日期		
设计	审核	2008.12.1	陈永彪	陈永彪	10-02-16	COMP ASSEMBLY	
材料						1:1	
工艺							305160-1700